

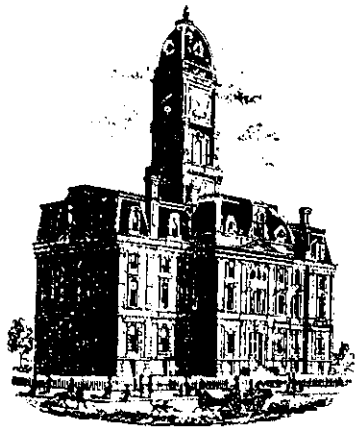
Drain: BLISS JOHNSON **Drain #:** 52
Improvement/Arm: CORNER CROSSING - PHASE I ENTRY
Operator: J. LIVINGSTON **Date:** 2-3-04
Drain Classification: Urban/Rural **Year Installed:** 2003

GIS Drain Input Checklist

- Pull Source Documents for Scanning
- Digitize & Attribute Tile Drains
- Digitize & Attribute Storm Drains
- Digitize & Attribute SSD
- Digitize & Attribute Open Ditch
- Stamp Plans
- Sum drain lengths & Validate
- Enter Improvements into Posse
- Enter Drain Age into Posse
- Sum drain length for Watershed in Posse
- Check Database entries for errors

JW

WJ



SURVEYOR'S OFFICE

Hamilton County

Kenton C. Ward, Surveyor

Phone (317) 776-8495

Fax (317) 776-9628

Suite 188

One Hamilton County Square
Noblesville, Indiana 46060-2230

February 20, 2003

To: Hamilton County Drainage Board

Re: Bliss Johnson Drain, Conner Crossing, Phase I Entry
Relocation

Attached is a petition and plans for the proposed relocation of the Bliss Johnson Drain. The relocation is being proposed by Primrose Development, LLC. The proposal is to intercept the original Bliss Johnson Drain as constructed in 1939 at or near Station 44+50. The Johnson Drain shall then be rerouted through the new storm system to be constructed as Conner Crossing of Noblesville, Phase One Entry. The down stream connection to the original Johnson Drain shall be at Sta. 52+15. The new Johnson Drain will be those pipe segments between Structures 605 to 606; 613 to 615 to 614 and 616. The segment between Str. 690 to 691 and 691 to 692 will be an arm to the Johnson Drain. The segment between Str. 603 to 602; 602 to 601 and 601 to 600 shall also be part of the Johnson Drain.

This line will consist of the following:

12" RCP	70 ft	Twin 48" RCP	173 ft
48" RCP	421 ft	Open Ditch	655 ft

The open ditch portion listed above will consist of the retention ponds in Common Areas "E" and "H". The distances are those straight line distances between structures 603 and 606; 603 and 613 and 615; 616 and 614 to 690; and 616 and 614 to Str. 705 to be constructed with Conner Crossing of Noblesville, Brookstone Phase One.

The retention ponds located in Common Areas "E" and "H" are not to be considered part of the regulated drain for maintenances purposes. Only the inlet and outlet will be maintained as part of the regulated drain. The maintenance of the pond will be the responsibility of the Homeowners Association or the City of Noblesville. The Board will however, retain jurisdiction for ensuring the storage volume for which the lake was designed will be retained. Thereby, allowing no fill or easement encroachments.

The total length of new drain shall be 1,319 feet. The 765 feet of original drain between Sta. 44+50 and Sta. 52+15 shall be vacated. This proposal will add an additional 554 feet to the drains total length.

The cost of the relocation is to be paid by Primrose Development. Because the project is to be paid by the petitioner and is within the boundaries of the petitioner's property, the project falls under the requirements as set out in IC 36-9-27-52.5. Therefore, a hearing is not required for the petition.

The petitioner will be providing the Performance Bonds upon approval by the Board.

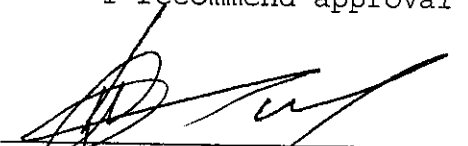
I believe this proposed drain meets the requirements for Urban Drain Classification as set out in IC 36-9-27-67 to 69. Therefore, this drain shall be designated as an Urban Drain.

I recommend that upon approval of the above-proposed drain that the Board also approve the attached non-enforcement request. This request is for the reduction of the regulated drain easement to those easement widths as shown on the secondary plat Conner Crossing of Noblesville, Phase I Entry as recorded in the office of the Hamilton County Recorder.

Lots within the subdivision shall be assessed at \$35.00. Common Areas will be assessed at \$5.00 per acre, with a \$35.00 minimum. Road assessment shall be set at \$10.00 per acre. These rates were set at hearing on April 23, 2001.

Parcels assessed for this drain may be assessed for the Sly Run Drain at sometime in the future.

I recommend approval by the Board at this time.



Kenton C. Ward
Hamilton County Surveyor

KCW/llm

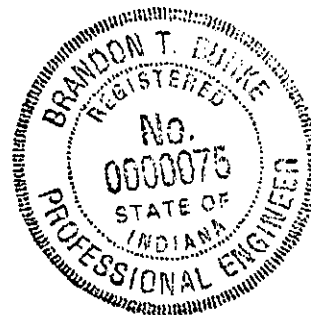
ENGINEERS ESTIMATE

PROJECT: Corner Crossing of Noblesville DATE: September 16, 2002
 Reconstruction of the Bliss Johnson Legal Drain
 LOCATION: Hamilton County IPEX SUMMARY JOB #: 3659-001

DESCRIPTION	QUANTITY	UNIT	UNIT PRICE	TOTAL
Brookston Phase One				
STORM				\$118,779.10
EROSION CONTROL				\$2,178.00
Cottage Grove Phase One				
STORM				\$76,182.70
EROSION CONTROL				\$1,072.50
Phase One Entry				
STORM				\$91,696.00
EROSION CONTROL				\$1,712.70
T O T A L				\$291,621.00

I certify that this estimate was prepared under my supervision and that it represents an estimate of costs for materials and labor to make the improvements shown on the construction plans and is based on standard methods of estimating such costs effective at the time the estimate was prepared.

By: Brandon T. Burke 11-7-02
 Brandon T. Burke, P.E.
 The Schneider Corporation
 12821 E. New Market Street, Suite 100
 Carmel, IN 46033



|::

CERTIFICATE OF COMPLETION AND COMPLIANCE

TO: HAMILTON COUNTY SURVEYOR
RE: Conner Crossing of Noblesville – Phase One Entry Legal Drain

I hereby certify that:

1. I am a Register Engineer in the State of Indiana
2. I am familiar with the plans and specifications for the above referenced subdivision.
3. I have personally observed and supervised the completion of the Drainage Facilities for the above referenced subdivision, and
4. To the best of my knowledge, information and belief, the Drainage Facilities within the subdivision has been installed and completed in conformity with all plans and specifications.

Signature: Brandon T. Burke Date: 6-8-05

Type or print name: Brandon T Burke, P.E.

Business /Address: The Schneider Corporation

12821 E. New Market Street, Suite 100, Carmel, IN 46032

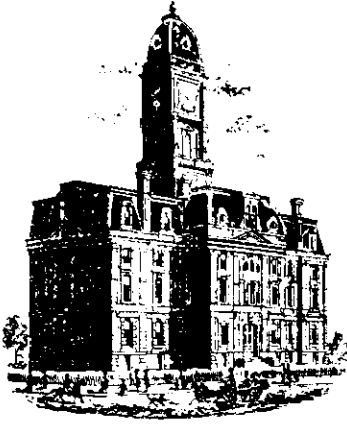
Telephone: (317) 569-8112

INDIANA REGISTRATION NUMBER

PE 10000075

SEAL





SURVEYOR'S OFFICE

Hamilton County

Kenton C. Ward, Surveyor

Phone (317) 776-8495

Fax (317) 776-9628

Suite 188

One Hamilton County Square

Noblesville, Indiana 46060-2230

To: Hamilton County Drainage Board

June 2, 2006

Re: Bliss Johnson Drain: Conner Crossing Phase I Entry Relocation

Attached are as-builts, certificate of completion & compliance, and other information for Conner Crossing Phase I Entry Relocation. An inspection of the drainage facilities for this section has been made and the facilities were found to be complete and acceptable.

During construction, changes were made to the drain, which will alter the plans submitted with my report for this drain-dated February 20, 2003. The report was approved by the Board at the hearing held March 24, 2003. (See Drainage Board Minutes Book 7, Pages 17-18)

The changes are as follows:

Structure:	Length:	Size	Material:	Up Invert:	Dn Invert:	Grade:	Changes(ft):
*614-613	177	48	RCP	826.06	825.66	0.23	-2
*616-615	177	48	RCP	826	825.67	0.19	-2
602-603	43	48	RCP	825.44	825.59	0.35	-10
601-602	85	48	RCP	825.59	825.26	0.39	2
600-601	53	48	RCP	825.26	825.17	0.9	-11
606-605	47	12	RCP	825.49	823.82	3.55	-23
692-691	168	48	RCP	826.53	826.25	0.17	-1
691-690	53	48	RCP	826.25	826.13	0.23	1

*Twin Pipes

RCP Pipe Totals:

12	47
48	579

Total: 626

Other Drain:	
Open	644

Total: 644

The length of the drain due to the changes described above is now **1270 feet**.

The non-enforcement was approved by the Board at its meeting on March 24, 2003 and recorded under instrument #200400083084.


The following sureties were guaranteed by Bond Safeguard Insurance Company and released by the Board on its November 8, 2004 meeting and September 26, 2005 meeting.

Bond-LC No: 5006806
Insured For: Reconstruction
Amount: \$291,621.00
Issue Date: November 21, 2003

Bond-LC No: 5012784
Insured For: Drains & outfall str.
Amount: \$25,551.00
Issue Date: October 8, 2004

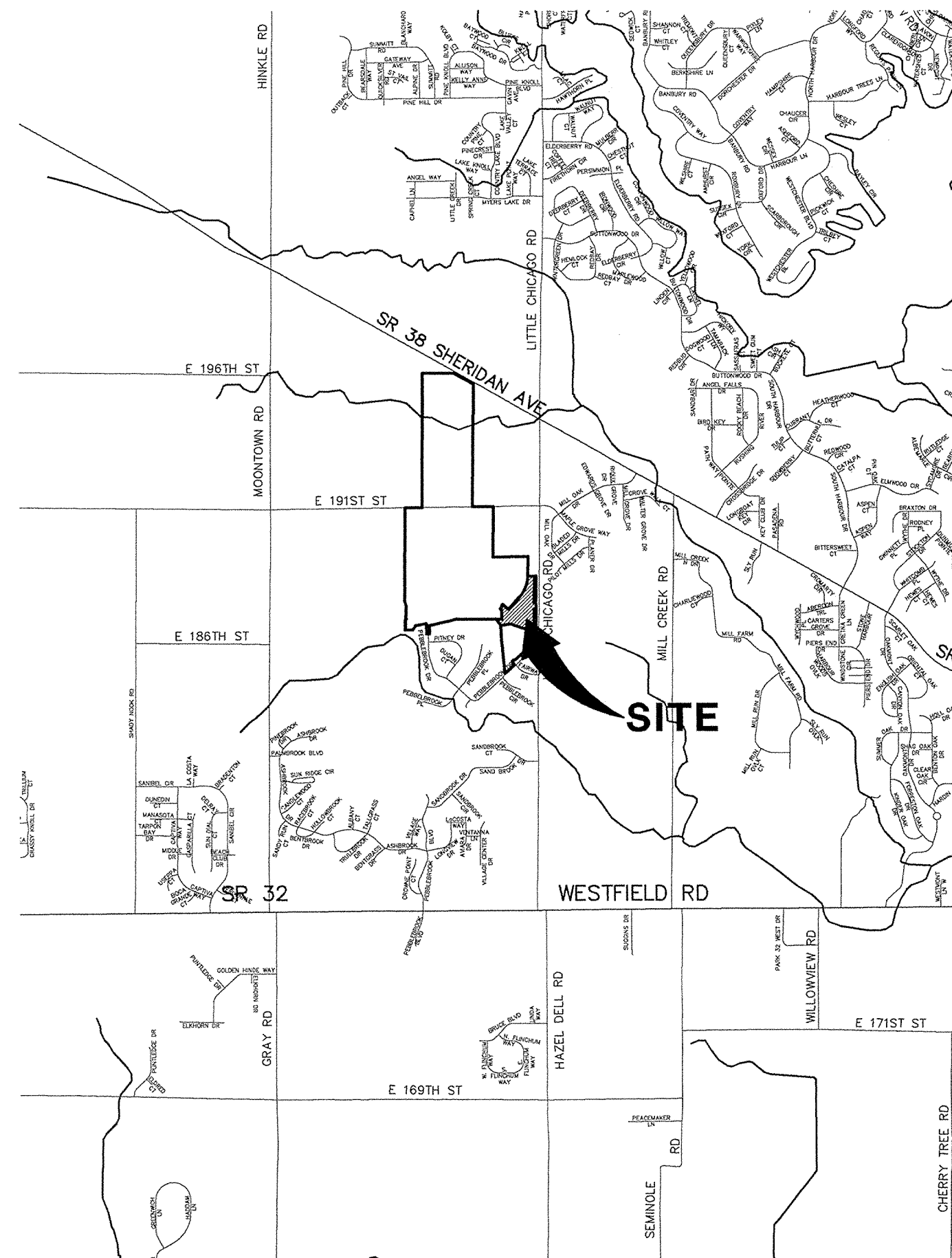
I recommend the Board approve the drain's construction as complete and acceptable.

Sincerely,

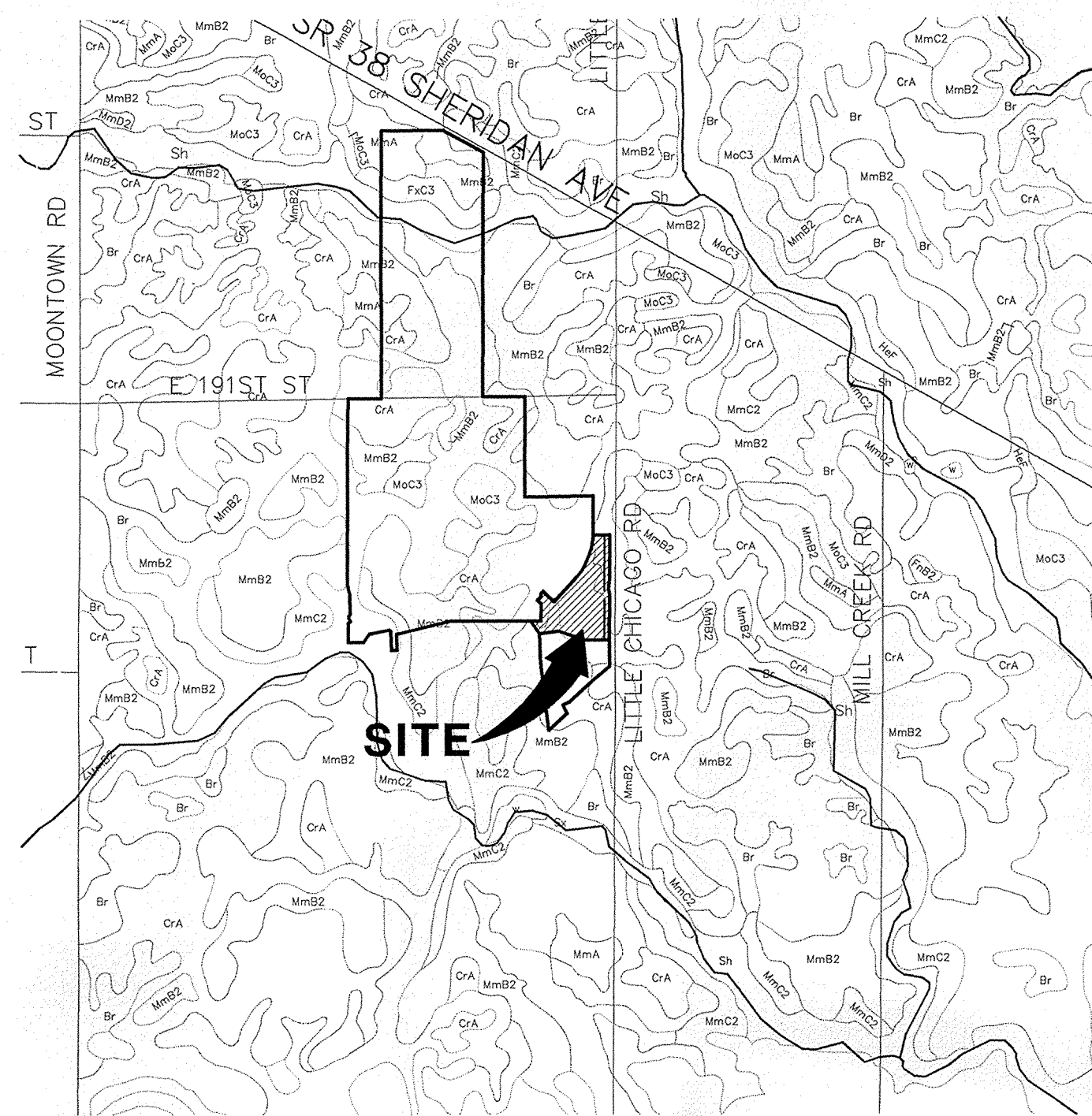


Kenton C. Ward,
Hamilton County Surveyor

KCW/slm

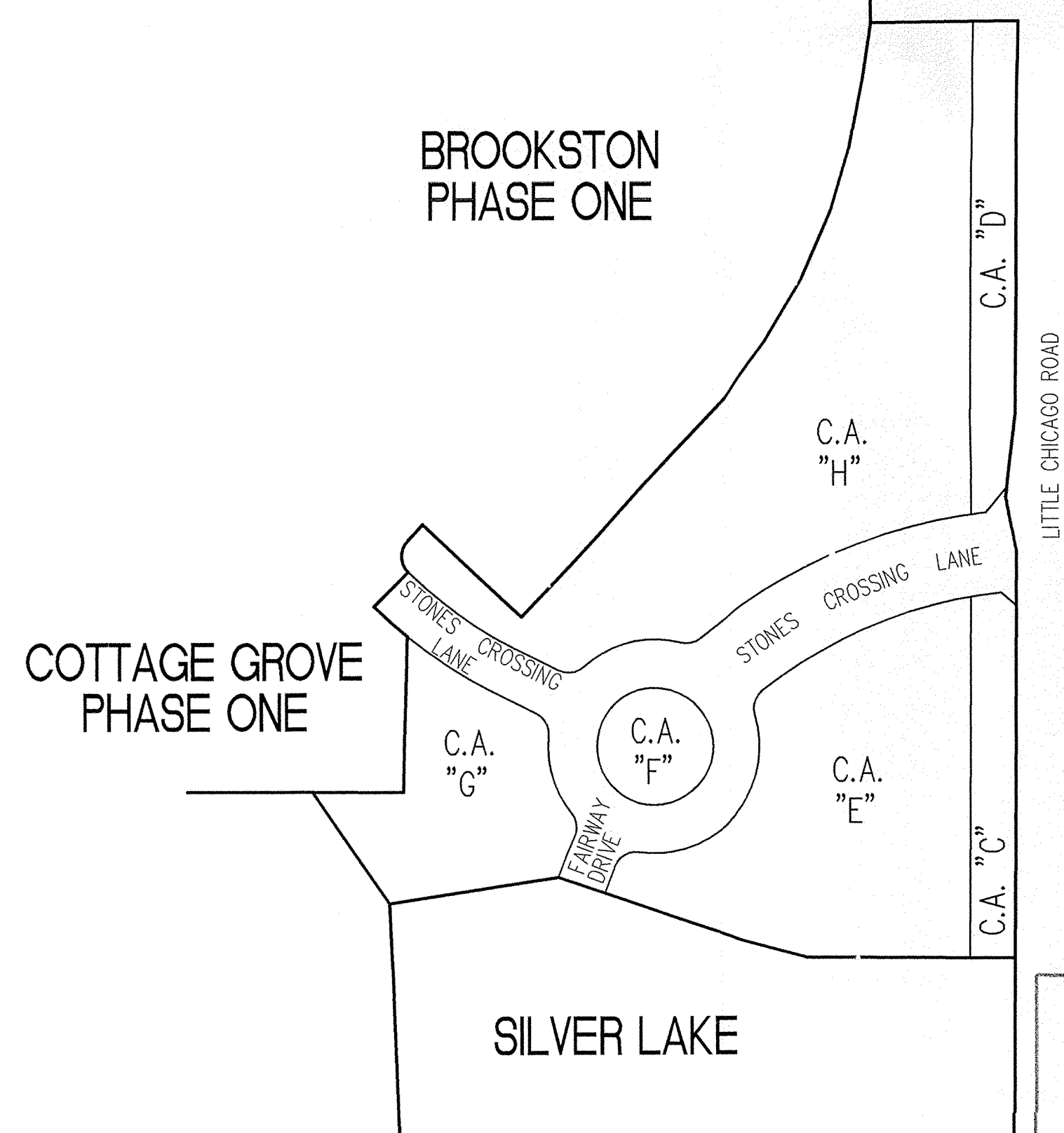


AREA MAP
NOT TO SCALE



SOILS MAP
NOT TO SCALE

SOIL LEGEND
SYMBOL NAME
Br Brookston silty clay loam
CrA Crosby silt loam



SITE MAP
SCALE: 1"=150'



This information was gathered for input into the Hamilton County Geographical Information System. This document is considered an official record of the GIS.

Entry Date: 4-21-06

Entered by: SLM

STORM & SANITARY STRUCTURE TABLE

Structure#	Structure Type	Neseoh Casting Type	East Jordan Casting Type
401	Sanitary Manhole Type A	R-1772-C	1022-2
402	Sanitary Manhole Type A	R-1772-C	1022-2
403	Sanitary Manhole Type B	R-1772-C	1022-2
600	Concrete End Section	N.A.	N.A.
601	Storm Manhole Type K	R-1772-C	1022-2
602	Storm Manhole Type K	R-1772-C	1022-2
603	Concrete End Section	N.A.	N.A.
605	Storm Manhole Type C	R-1772-C	1022-2
606	Concrete End Section	N.A.	N.A.
608	Concrete End Section	N.A.	N.A.
609	Catch Basin Type A	R-3501-TR	7495M1
610	Concrete End Section	N.A.	N.A.
611	Catch Basin Type A	R-3501-TR	7495M1
612	Inlet Type A	R-3501-TL	7495M2
613	Concrete End Section	N.A.	N.A.
614	Concrete End Section	N.A.	N.A.
615	Concrete End Section	N.A.	N.A.
616	Concrete End Section	N.A.	N.A.
640	Concrete End Section	N.A.	N.A.
641	Storm Manhole Type H	R-1772-C	1022-2
642	Storm Manhole Type H	R-4342	6489
652	Catch Basin Type A	R-3501-TL	7495M2
653	Inlet Type A	R-3501-TR	7495M1
656	Inlet Type A	R-4342	6489
690	Concrete End Section	N.A.	N.A.
691	Storm Manhole Type K	R-1772-C	1022-2
692	Storm Manhole Type L	R-1772-C	1022-2
696	Catch Basin Type A	R-3501-TR	7495M1
696A	Inlet Type A	R-3501-TL	7495M2
697	Inlet Type A	R-3501-TL	7495M2
697A	Catch Basin Type A	R-3501-TR	7495M1

NOTE:

ANY TYPE "A" STORM STRUCTURE IN WHICH INCOMING OR OUTGOING PIPES ARE NOT PERPENDICULAR TO THE STRUCTURE SHALL BE INCREASED IN SIZE SO THAT THE CORNERS OF STRUCTURE ARE LEFT INTACT

REVISIONS:	DATE:	BY:	DESCRIPTION:
08/14/02	BET		ALL SHEETS
09/03/02	BET		C101, C701
02/10/03	BET		C101, C102, C201, C301-C303, C401, C602 & C701
08/04/03	BET		C100, C101, C601 & C602
08/20/03	BET		ALL SHEETS
11/14/03	BET		ALL SHEETS
7/26/04	BET		"RECORD DRAWING"
8/09/04	DCC		"RECORD DRAWING" C101, C401 & C402

PROJECT ENGINEER: _____

CHECKED BY: _____ DATE CHECKED: _____

DEVELOPER:

PRIMROSE DEVELOPMENT, L.L.C.

1016 3RD. AVENUE, SW SUITE 100

CARMEL, INDIANA 46032

(317) 846-6641

CONTACT: JIM WHITE

ZONING: R1/PD

CONNER CROSSING OF NOBLESVILLE PHASE ONE ENTRY

(CONSTRUCTION PLANS)

HAMILTON COUNTY NOBLESVILLE, INDIANA

SEC. 28 & 33-T19N-R4E

**SANITARY SEWER
STORM SEWER
RECORD DRAWING**

SHEET No.	DESCRIPTION
C100	COVER SHEET
C101	DEVELOPMENT PLAN
C102	EROSION CONTROL PLAN
C201	STREET PLAN AND PROFILE
C301	INTERSECTION DETAILS
C302	ENTRANCE PLAN
C303	MAINTENANCE OF TRAFFIC PLAN
C304	TRAFFIC CONTROL AND SIGNAGE PLAN
C401	SANITARY SEWER PLAN AND PROFILE
C601-C602	STORM SEWER PLAN AND PROFILE
C701	WATER DISTRIBUTION PLAN
C801-C811	NOBLESVILLE DETAILS
C812	GENERAL DETAILS
C813	EROSION CONTROL DETAILS



12821 E. New Market Street
Suite 100
Carmel, IN 46032
Telephone: 317.569.8112
Fax: 317.826.6410
www.schneidercorp.com

Architecture
Civil Engineering
Environmental Engineering
Geotechnical Services
GIS * LIS
Home Builder Services
Interior Design
Land Surveying
Landscape Architecture
Transportation Engineering

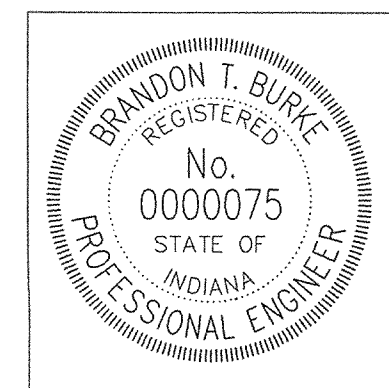
Brandon T. Burke
CERTIFIED BY: BRANDON T. BURKE

E-MAIL ADDRESS: bburke@schneidercorp.com

STREET SUMMARY

Name	Length of Street (feet)	Length of Street (miles)
Fairway Drive	83	0.02
Stones Crossing Lane	690	0.13
Total	773	0.15

THESE DOCUMENTS ARE SUBJECT TO PERIODIC REVISIONS BY THE SCHNEIDER CORPORATION. THE HOLDER IS RESPONSIBLE FOR VERIFYING THAT THESE DOCUMENTS ARE THE MOST CURRENT PRIOR TO USE.



DATE: _____

SIR. NO.	INVERT IN	INVERT OUT
600	825.20 (48" NW)	
601	832.00	825.33 (48" N)
602	832.00	825.49 (48" S)
603		825.60 (48" SE)
605	825.39 (12" W)	823.84 (-15" VCP SE)
606		825.60 (12" E)
613	825.60 (48" NW)	
614		825.95 (48" SE)
615	825.60 (48" NW)	
616		825.95 (48" SE)
630	825.95 (48" SW)	
631	832.00	826.07 (48" NE)
632	833.80	826.44 (48" NE)

BENCHMARK

BM #1 - In Hamilton County, about 1.4 miles south of Westfield, 1.4 miles south along "old" U.S. Highway 31 from its intersection with State Road 32 in Westfield to an east-west cross road, thence 0.1 mile east to a concrete bridge over Coal Creek, set in the top of the east corner of the bridge, 11 feet north of the center line of the east-west road, 15 feet east of the center line of the north-south road, 80 feet north of the south face of the headwall, a chained triangle Elevation = 845.033 (NOVD 1929)

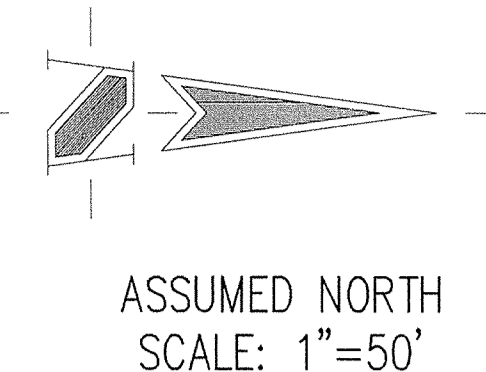
BM #2 - In Hamilton County, about 1.4 miles south of Westfield, 1.4 miles south along "old" U.S. Highway 31 from its intersection with State Road 32 in Westfield to an east-west cross road, thence 0.1 mile east to a concrete bridge over Coal Creek, set in the top of the west end of the north quadrant of the bridge, 11 feet north of the center line of the road, 2.9 feet above the roadway, 1.4 feet east of the west face of the north quadrant, a Standard Indiana Flood Control and Water Resources Commission bronze benchmark tablet, stamped "HAM 16 1959" (Note: bronze disk gone) Elevation = 846.716

UTILITIES - NOBLESVILLE

GAS	ELECTRIC	COUNTY REGULATED DRAINS	SANITARY SEWER
Huron/Indiana Gas P. O. Box 1700 Noblesville, IN 46060 (317) 778-5334 Attn: Mr. Don Perdue	Cherry 100 S. Mill Creek Road Noblesville, IN 46060 (317) 778-5339 Attn: Mike Kozick	Hamilton County Surveyor's Office Kurt Wittinger, Suite 188 One Hamilton County Square Noblesville, IN 46060-2200 (317) 778-8495	City of Noblesville Wastewater Utility Dept. 187 N. Washington Street Noblesville, IN 46060 (317) 778-8353 Attn: Mr. David Anshus
TELEPHONE	CABLE TV	WATER	TELEPHONE
Amitech 2808 N. College Avenue Indianapolis, IN 46220 (317) 292-0009 Attn: Mr. Dave Ad	Inlight Communications 15229 Stony Creek Way Noblesville, IN 46060 (317) 778-4495 Attn: Tim Olson	Indianapolis Water Company 1229 Waterway Boulevard Indianapolis, IN 46209 (317) 984-4244 Attn: Mr. Stan Groves	Verizon 20905 Hague Road Noblesville, IN 46060 (317) 984-2334 Attn: Steve Caslow
PIPELINES	Pinehills Eastern Pipe Line 9377 Zionsville Road Indianapolis, IN 46268 (317) 733-3013 Attn: Mr. Sharon Prater		

Utility Hotline: within Indiana 1-800-382-5544
outside Indiana 1-800-428-5000

NOTE: The size and location of utilities are per plans and locations provided by the respective utility companies. All utility companies shall be notified prior to any excavation for field location of services.



NOTE: BOTH TEMPORARY AND PERMANENT CONDITIONS ARE PART OF PRIVATE DEVELOPMENT. PERMANENT CONDITIONS TO BE CONSTRUCTED AFTER LITTLE CHICAGO IMPROVEMENTS.

HOLEY MOLEY SAYS
"DON'T DIG BLIND"

"IT'S THE LAW"
CALL 3 WORKING DAYS BEFORE YOU DIG
1-800-382-5544
CALL TOLL FREE
PER INDIANA STATE LAW IS-69-1991, IT IS AGAINST THE LAW TO EXCAVATE WITHOUT NOTIFYING THE UNDERGROUND LOCATION SERVICE TWO (2) WORKING DAYS BEFORE COMMENCING WORK.

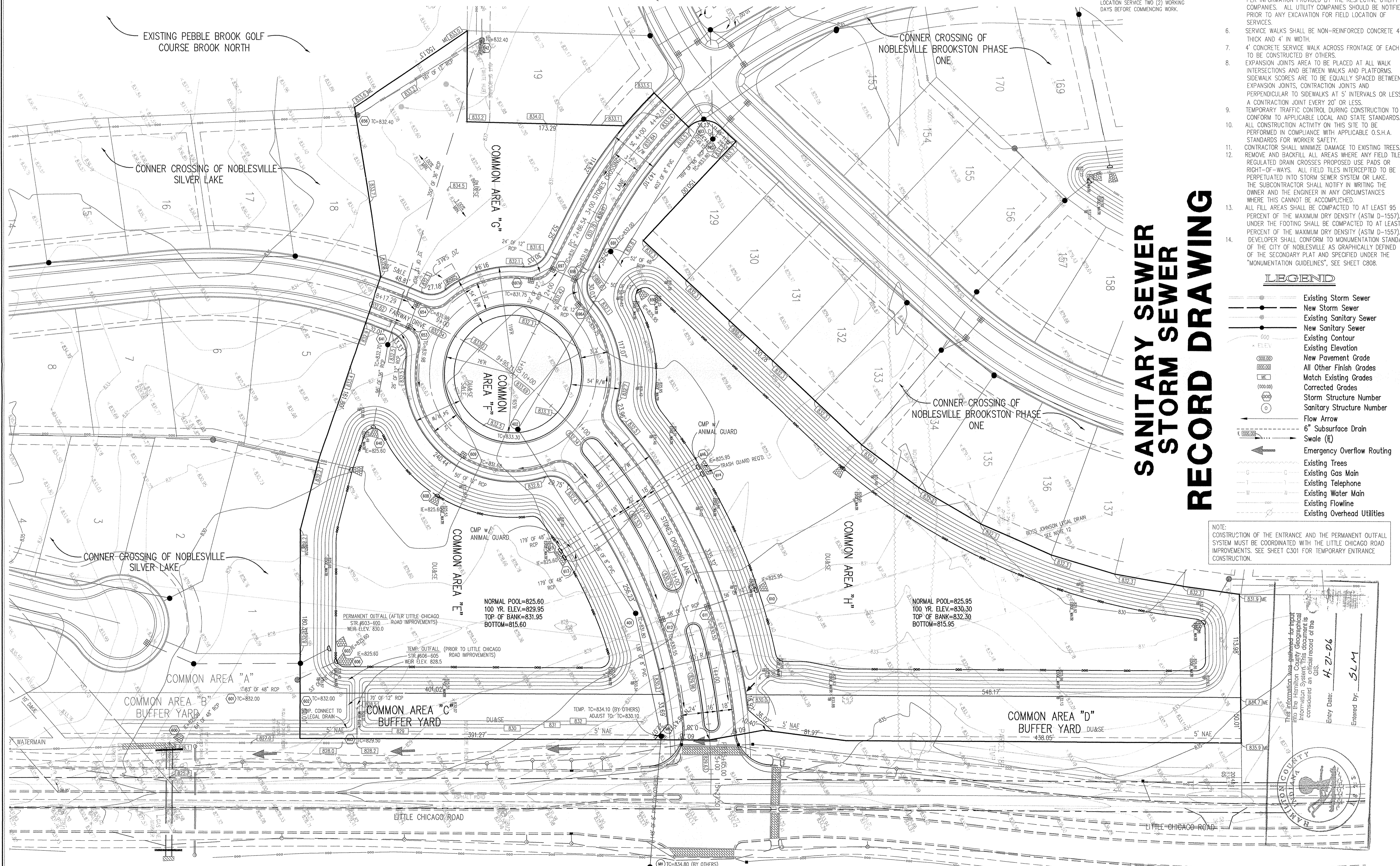
GENERAL NOTES

- ALL GRADES AT BOUNDARY SHALL MEET EXISTING GRADES.
- IT SHALL BE THE RESPONSIBILITY OF EACH CONTRACTOR TO VERIFY ALL EXISTING UTILITIES AND CONDITIONS PERTAINING TO HIS PHASE OF WORK. IT SHALL ALSO BE THE CONTRACTOR'S RESPONSIBILITY TO CONTACT THE OWNERS OF THE VARIOUS UTILITIES FOR PROPER STAKE LOCATIONS FOR EACH UTILITY BEFORE WORK IS STARTED. THE CONTRACTOR SHALL NOTIFY IN WRITING THE OWNER OR THE ENGINEER OF ANY CHANGES, OMISSIONS, OR ERRORS FOUND ON THESE PLANS OR IN THE FIELD BEFORE WORK IS STARTED OR RESUMED.
- STANDARD SPECIFICATIONS FOR THE CITY OF NOBLESVILLE, INDIANA SHALL APPLY FOR ALL SANITARY SEWER AND STORM SEWERS.
- ANY PART OF THE SANITARY OR STORM SEWER TRENCHES RUNNING UNDER PAVED AREAS TO BE BACKFILLED WITH GRANULAR MATERIAL.
- THE SIZE AND LOCATION OF EXISTING UTILITIES SHOWN ARE PER INFORMATION PROVIDED BY THE RESPECTIVE UTILITY COMPANIES. ALL UTILITY COMPANIES SHOULD BE NOTIFIED PRIOR TO ANY EXCAVATION FOR FIELD LOCATION OF SERVICES.
- SERVICE WALKS SHALL BE NON-REINFORCED CONCRETE 4" THICK AND 4' IN WIDTH.
- 4" CONCRETE SERVICE WALK ACROSS FRONTAGE OF EACH LOT TO BE CONSTRUCTED BY OTHERS.
- EXPANSION JOINTS AREA TO BE PLACED AT ALL WALK INTERSECTIONS AND BETWEEN WALKS AND PLATFORMS. SIDEWALK SCORES ARE TO BE EQUALLY SPACED BETWEEN EXPANSION JOINTS, CONTRACTION JOINTS AND PERPENDICULAR TO SIDEWALKS AT 5' INTERVALS OR LESS WITH A CONTRACTION JOINT EVERY 20' OR LESS.
- TEMPORARY TRAFFIC CONTROL DURING CONSTRUCTION TO CONFORM TO APPLICABLE LOCAL AND STATE STANDARDS. ALL CONSTRUCTION ACTIVITY ON THIS SITE TO BE PERFORMED IN COMPLIANCE WITH APPLICABLE O.S.H.A. STANDARDS FOR WORKER SAFETY.
- CONTRACTOR SHALL MINIMIZE DAMAGE TO EXISTING TREES, REMOVE AND BACKFILL ALL AREAS WHERE ANY FIELD TILE OR REGULATED DRAIN CROSSES PROPOSED USE PADS OR RIGHT-OF-WAYS. ALL FIELD TILES INTERCEPTED TO BE PERPETUATED INTO STORM SEWER SYSTEM OR LAKE. THE SUBCONTRACTOR SHALL NOTIFY IN WRITING THE OWNER AND THE ENGINEER IN ANY CIRCUMSTANCES WHERE THIS CANNOT BE ACCOMPLISHED.
- ALL FILL AREAS SHALL BE COMPACTED TO AT LEAST 95 PERCENT OF THE MAXIMUM DRY DENSITY (ASTM D-1557). FILL UNDER THE FOOTING SHALL BE COMPACTED TO AT LEAST 95 PERCENT OF THE MAXIMUM DRY DENSITY (ASTM D-1557). DEVELOPER SHALL CONFORM TO MONUMENTATION STANDARDS OF THE CITY OF NOBLESVILLE AS GRAPHICALLY DEFINED OF THE SECONDARY PLAN AND SPECIFIED UNDER THE "MONUMENTATION GUIDELINES", SEE SHEET C808.

LEGEND

- Existing Storm Sewer
- New Storm Sewer
- Existing Sanitary Sewer
- New Sanitary Sewer
- Existing Contour
- Existing Elevation
- New Pavement Grade
- All Other Finish Grades
- Match Existing Grades
- Corrected Grades
- Storm Structure Number
- Sanitary Structure Number
- Flow Arrow
- 6" Subsurface Drain
- Swale (R)
- Emergency Overflow Routing
- Existing Trees
- Existing Gas Main
- Existing Telephone
- Existing Water Main
- Existing Flowline
- Existing Overhead Utilities

NOTE: CONSTRUCTION OF THE ENTRANCE AND THE PERMANENT OUTFALL SYSTEM MUST BE COORDINATED WITH THE LITTLE CHICAGO ROAD IMPROVEMENTS. SEE SHEET C301 FOR TEMPORARY ENTRANCE CONSTRUCTION.



**SANITARY SEWER
STORM SEWER
RECORD DRAWING**

Information was gathered for input into the City Geographical Information System (GIS) and is considered an official record of the GIS.

Entry Date: **6-2-06**
Entered by: **SLM**

REVISIONS:
1. 06/02/06 REVISION PER ILC COMMENTS
2. 06/02/06 REVISION PER ILC COMMENTS
3. 06/02/06 REVISION SANITARY LOCATION PER LANDSCAPE PLAN CONSIDERATIONS
4. 06/02/06 REVISION PER ILC COMMENTS
5. 06/02/06 REVISION PER ILC COMMENTS
6. 06/02/06 REVISION PER ILC COMMENTS
7. 06/02/06 REVISION PER ILC COMMENTS
8. 06/02/06 REVISION PER ILC COMMENTS

BRANDON T. BURKE
REGISTERED
No. 0000075
STATE OF INDIANA
PROFESSIONAL ENGINEER

Brandon T. Burke

DATE: _____
THIS DRAWING AND THE IDEAS, DESIGNS AND CONCEPTS CONTAINED HEREIN ARE THE EXCLUSIVE INTELLECTUAL PROPERTY OF THE SCHNEIDER CORPORATION, AND ARE NOT TO BE USED OR REPRODUCED IN WHOLE OR IN PART, WITHOUT THE WRITTEN CONSENT OF THE SCHNEIDER CORPORATION.
© COPYRIGHTED BY THE SCHNEIDER CORP. (2002)

Schneider

THE SCHNEIDER CORPORATION
12821 E. New Market Street
Suite 100
Carmel, IN 46032
Telephone: 317.569.8112
Fax: 317.826.6410
www.schneidercorp.com

Architecture
Civil Engineering
Environmental Engineering
Geotechnical Services
GIS * LIS
Home Builder Services
Interior Design
Land Surveying
Landscape Architecture
Transportation Engineering

**CONNER CROSSING OF NOBLESVILLE
PHASE ONE ENTRY**

NOBLESVILLE, INDIANA
PRIMROSE DEVELOPMENT, L.L.C.
CARMEL, INDIANA

DATE: 6/26/02 PROJECT NO.: 3659.002
DRAWN BY: BET CHECKED BY:
SHEET TITLE: DEVELOPMENT PLAN
DRAWING FILES:
N:\3659\002\DWG\C101.DWG
XREF: 3659001.DWG
XREF: BRK-1-BS.DWG
XREF: CA-1-BS.DWG
XREF: COT-1-BS.DWG
XREF: PEN-1-BS.DWG
XREF: LCR-ref.DWG
SHEET NO.:
C101

BENCHMARK

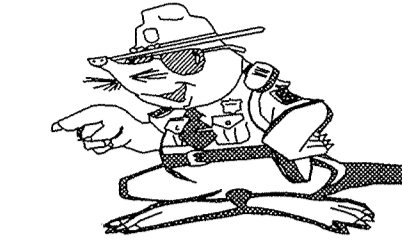
BM #1 - In Hamilton County, about 1.4 miles south of Westfield, 1.4 miles south along "old" U.S. Highway 31 from its intersection with State Road 32 in Westfield to an east-west cross road, at a 1.5 foot pipe culvert under the road, in the northeast quarter of the intersection, set in the top of the east concrete headwall of the culvert, 23 feet north of the center line of the east-west road, 15 feet east of the center line of the north-south road, 601 feet north of the south face of the headwall, a chiseled triangle Elevation = 845.033 (NGVD 1929)

BM #2 - In Hamilton County, about 1.4 miles south of Westfield, 1.4 miles south along "old" U.S. Highway 31 from its intersection with State Road 32 in Westfield to an east-west cross road, thence 0.1 mile east to a concrete bridge over Cool Creek, set in the top of the west end of the north guardrail of the bridge, 11 feet north of the center line of the road, 2.9 feet above the roadway, 1.4 feet east of the west face of the north guardrail, a Standard Indiana Flood Control and Water Resources Commission bronze benchmark tablet, stamped "HAM 16 1959" (Note: bronze disk gone) Elevation = 846.716

NOTE:
ANY TYPE "A" STORM STRUCTURE IN WHICH INCOMING OR OUTGOING PIPES ARE NOT PERPENDICULAR TO THE STRUCTURE SHALL BE INCREASED IN SIZE SO THAT THE CORNERS OF STRUCTURE ARE LEFT INTACT

HOLEY MOLEY SAYS

"DON'T DIG BLIND"



"IT'S THE LAW"
CALL 2 WORKING DAYS BEFORE YOU DIG
1-800-382-5544
CALL TOLL FREE

PER INDIANA STATE LAW IS-69-1991, IT IS AGAINST THE LAW TO EXCAVATE WITHOUT NOTIFYING THE UNDERGROUND LOCATION SERVICE TWO (2) WORKING DAYS BEFORE COMMENCING WORK.

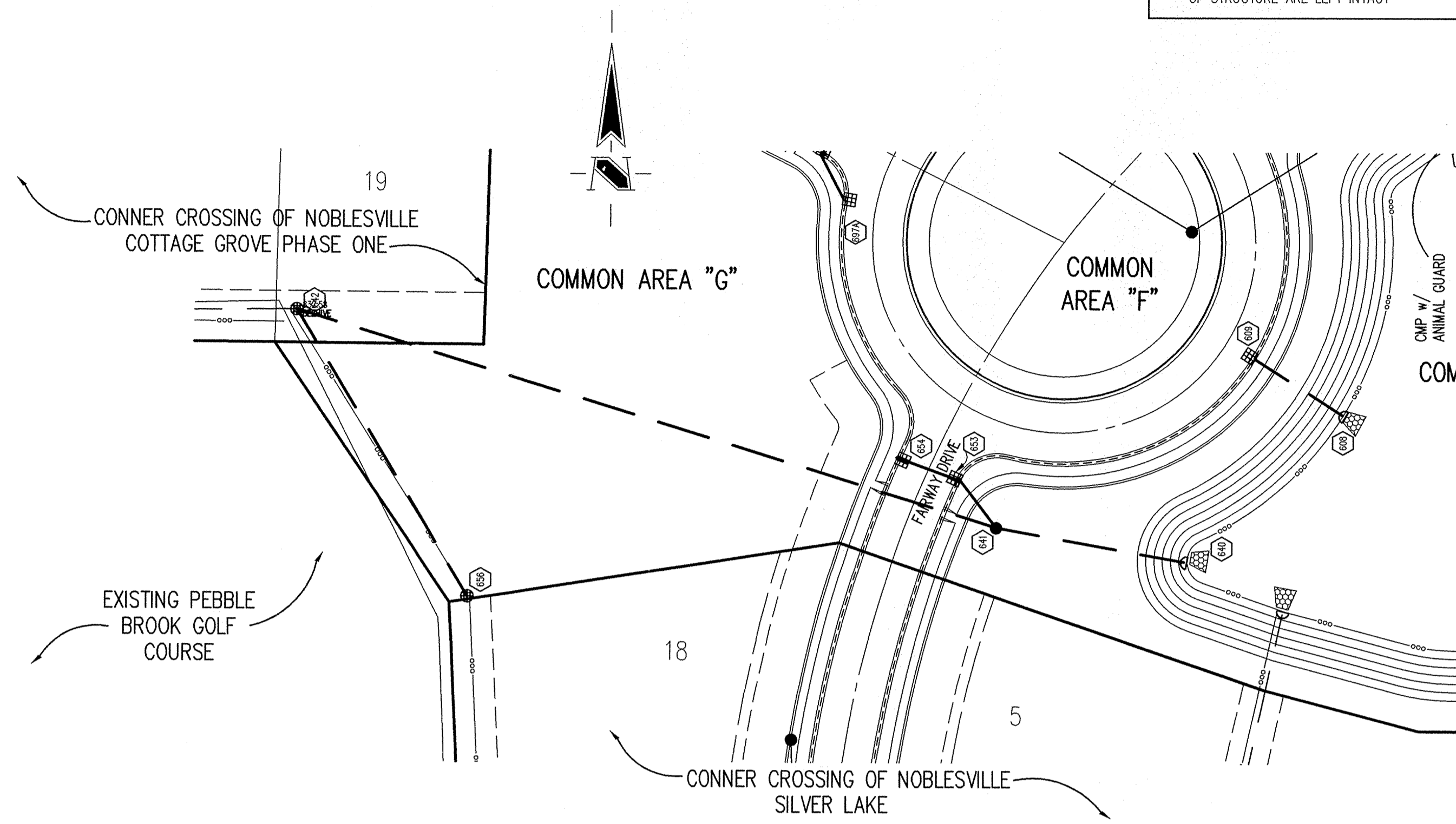
GENERAL NOTES

- TEMPORARY TRAFFIC CONTROL DURING CONSTRUCTION TO CONFORM TO APPLICABLE LOCAL AND STATE STANDARDS.
- ALL CONSTRUCTION ACTIVITY ON THIS SITE TO BE PERFORMED IN COMPLIANCE WITH APPLICABLE O.S.H.A. STANDARDS FOR WORKER SAFETY.
- IT SHALL BE THE CONTRACTORS RESPONSIBILITY TO FIELD VERIFY ALL UTILITY LOCATIONS BEFORE CONSTRUCTION BEGINS.
- CONTRACTORS SHALL MINIMIZE DAMAGE TO EXISTING TREES.

Sheet Number	Description
CB04	Bedding Detail - Reinforced Concrete Pipe (RCP)
CB05	Roll Curb Inlet Detail
CB05	Beehive Inlet Detail
CB05	Storm Manhole Detail
CB05	Precast Concrete End Section
CB12	RipRap Detail @ End Section

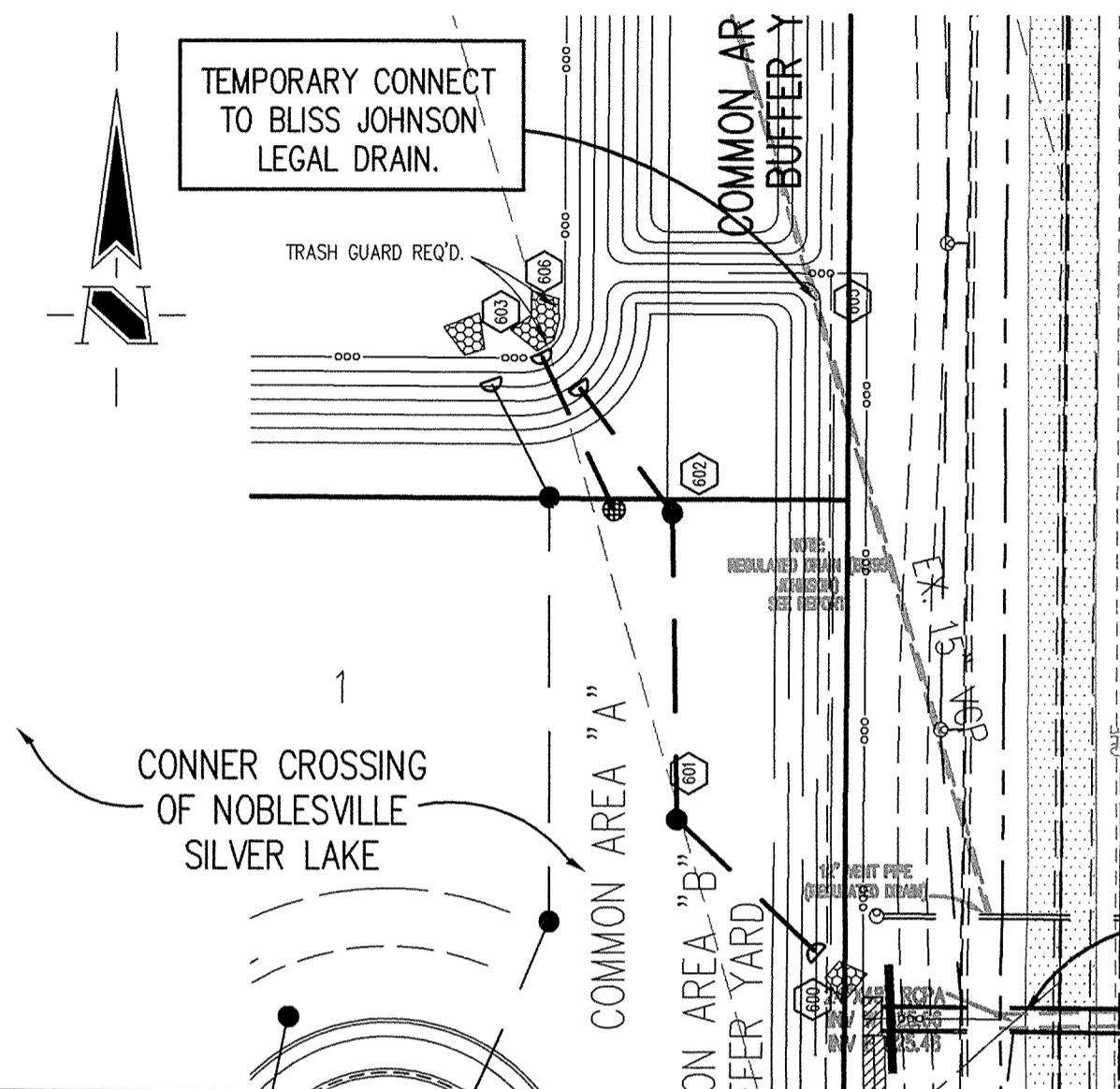
LEGEND/DETAILS

NOTE



This information was gathered for input into the Hamilton County Geographical Information System. This document is considered an official record of the GIS.

Entry Date: 4-21-06
Entered by: SLM



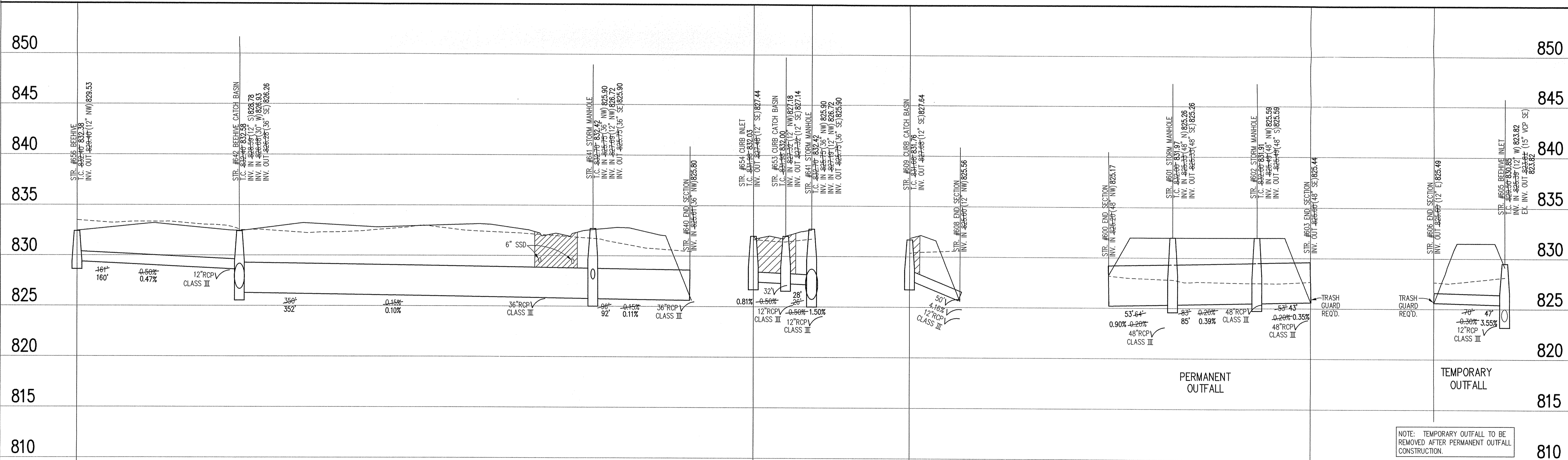
EXISTING MILL GROVE SUBDIVISION

NOTE: BOTH TEMPORARY AND PERMANENT CONDITIONS ARE PART OF PRIVATE DEVELOPMENT. PERMANENT CONDITIONS TO BE ONLY CONSTRUCTED AFTER LITTLE CHICAGO IMPROVEMENTS.

PROPOSED 4'x6' BOX CULVERT BY LITTLE CHICAGO ROAD IMPROVEMENTS. REQUIRED BEFORE PERMANENT OUTFALL CONSTRUCTION.

STORM SEWER PLAN

SCALE: 1"=50'



NOTE: TEMPORARY OUTFALL TO BE REMOVED AFTER PERMANENT OUTFALL CONSTRUCTION.

STORM SEWER RECORD DRAWING

STORM SEWER PROFILE

LEGEND

	Existing Grade
	New Grade
	Granular Backfill

SCALE: **HORZ.: 1"=50'**
VERT.: 1"=5'

REVISIONS

- BET. 08/14/02 REVISION PER TIC COMMENTS.
- BET. 08/04/03 REVISION PER CITY OF NOBLESVILLE COMMENTS.
- BET. 08/20/03 REVISION PER CLIENT.
- BET. 09/02/03 REVISION PER CLIENT.
- DCC: 2/9/04 REVISION STR.# 842.
- BET. 7/26/04 "RECORD DRAWING"
- BET. 5/4/05 UPDATED "RECORD DRAWING" TO INCLUDE PERMANENT OUTFALL.

BRANDON T. BURKE
REGISTERED
No. 10000075
STATE OF INDIANA
PROFESSIONAL ENGINEER

Brandon T. Burke

DATE: 8-15-02

THIS DRAWING AND THE IDEAS, DESIGNS AND CONCEPTS CONTAINED HEREIN ARE THE EXCLUSIVE INTELLECTUAL PROPERTY OF THE SCHNEIDER CORPORATION, AND ARE NOT TO BE USED OR REPRODUCED, IN WHOLE OR IN PART, WITHOUT THE WRITTEN CONSENT OF THE SCHNEIDER CORPORATION.

© COPYRIGHTED BY THE SCHNEIDER CORP. (2002)

Schneider

THE SCHNEIDER CORPORATION
12821 E. New Market Street
Suite 100
Carmel, IN 46032
Telephone: 317.569.8112
Fax: 317.826.6410
www.schneidercorp.com

Architecture
Civil Engineering
Environmental Engineering
Geotechnical Services
GIS * LIS
Home Builder Services
Interior Design
Land Surveying
Landscape Architecture
Transportation Engineering

CONNER CROSSING OF NOBLESVILLE PHASE ONE ENTRY
NOBLESVILLE, INDIANA
PRIMROSE DEVELOPMENT, L.L.C.
CARMEL, INDIANA

DATE: 6/26/02 PROJECT NO.: 3659.002
DRAWN BY: DCC CHECKED BY:
SHEET TITLE: STORM SEWER PLAN & PROFILE
DRAWING FILES:
N:\3659\3659\02\DWG\CS\601-602.DWG
XREF: CA-1-B5.DWG
XREF: COT-1-B5.DWG
XREF: PBN-1-B5.DWG
XREF: BRN-1-B5.DWG
XREF: 3659001S.DWG
XREF: FUTR-B5.DWG
XREF: 002-STIM.DWG
SHEET NO.: **C601**

BENCHMARK

BM #1 - In Hamilton County, about 1.4 miles south of Westfield, 1.4 miles south along "old" U.S. Highway 31 from its intersection with State Road 32 in Westfield to an east-west cross road, at a 1.5 foot pipe culvert under the road, in the northeast quarter of the intersection, set in the top of the east concrete headwall of the culvert, 2.3 feet north of the center line of the east-west road, 15 feet east of the center line of the north-south road, 60 feet north of the south face of the headwall, a chiseled triangle Elevation = 845.033 (NGVD 1929)

BM #2 - In Hamilton County, about 1.4 miles south of Westfield, 1.4 miles south along "old" U.S. Highway 31 from its intersection with State Road 32 in Westfield to an east-west cross road, thence 0.1 mile east to a concrete bridge over Cool Creek, set in the top of the west end of the north guardrail of the bridge, 11 feet north of the center line of the road, 2.8 feet above the roadway, 1.4 feet east of the west face of the north guardrail, a Standard Indiana Flood Control and Water Resources Commission bronze benchmark tablet, stamped "HAM 16 1959" (Note: bronze disk gone) Elevation = 846.716

HOLEY MOLEY SAYS
"DON'T DIG BLIND"



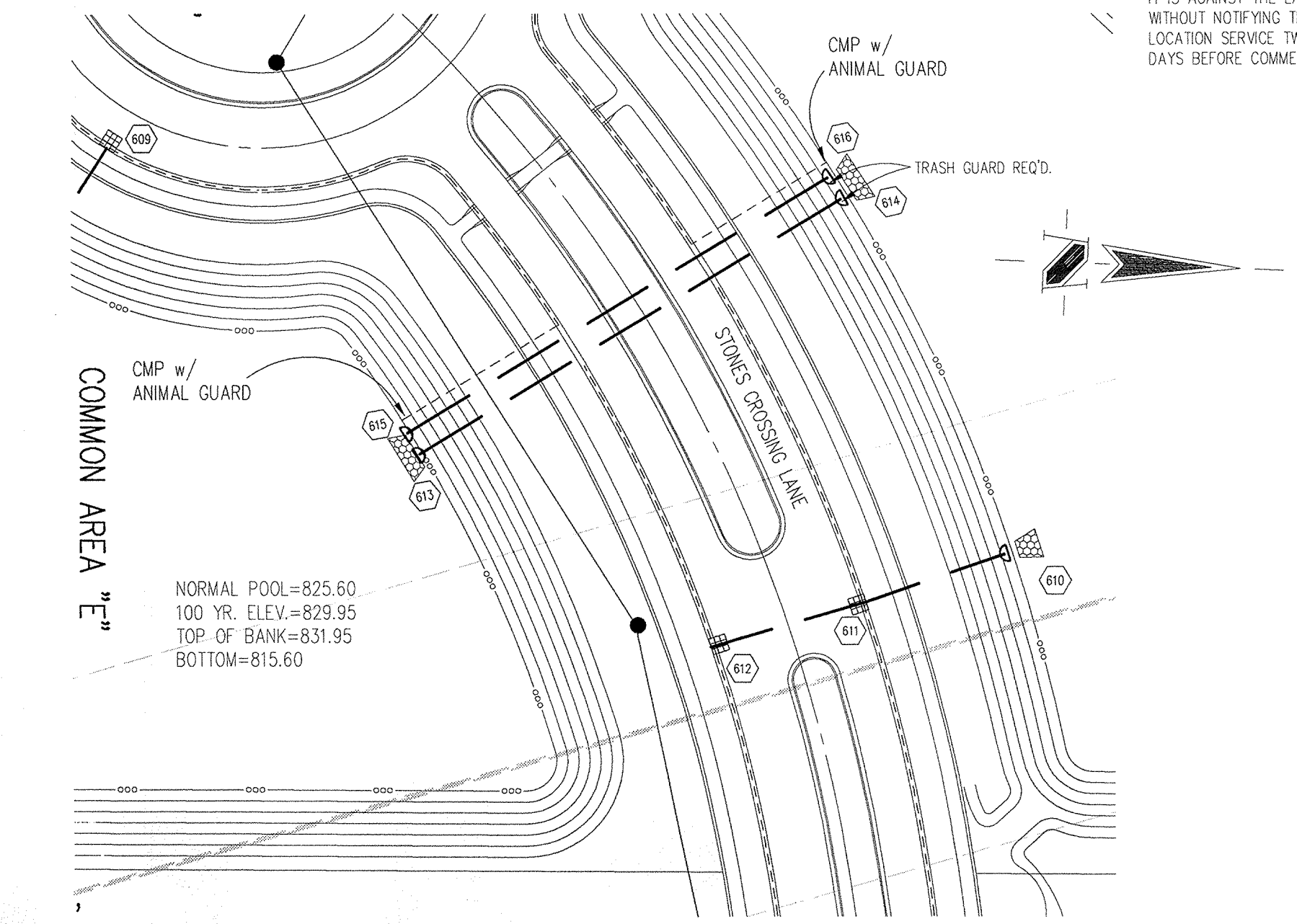
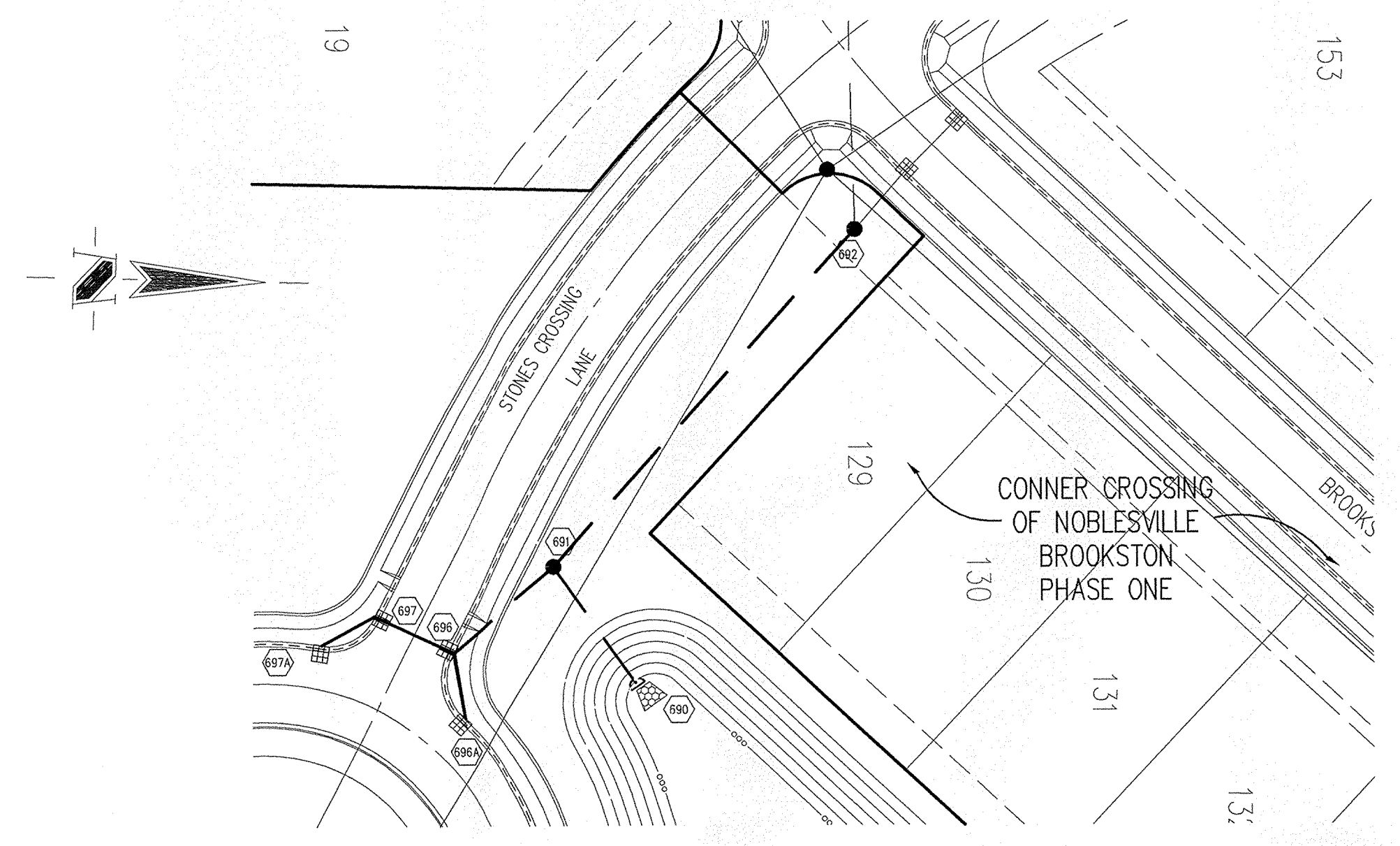
"IT'S THE LAW"
CALL 2 WORKING DAYS BEFORE YOU DIG
1-800-382-5544
CALL TOLL FREE
PER INDIANA STATE LAW IS-69-1991
IT IS AGAINST THE LAW TO EXCAVATE WITHOUT NOTIFYING THE UNDERGROUND LOCATION SERVICE TWO (2) WORKING DAYS BEFORE COMMENCING WORK.

GENERAL NOTES

- TEMPORARY TRAFFIC CONTROL DURING CONSTRUCTION TO CONFORM TO APPLICABLE LOCAL AND STATE STANDARDS.
- ALL CONSTRUCTION ACTIVITY ON THIS SITE TO BE PERFORMED IN COMPLIANCE WITH APPLICABLE O.S.H.A. STANDARDS FOR WORKER SAFETY.
- IT SHALL BE THE CONTRACTORS RESPONSIBILITY TO FIELD VERIFY ALL UTILITY LOCATIONS BEFORE CONSTRUCTION BEGINS.
- CONTRACTORS SHALL MINIMIZE DAMAGE TO EXISTING TREES.

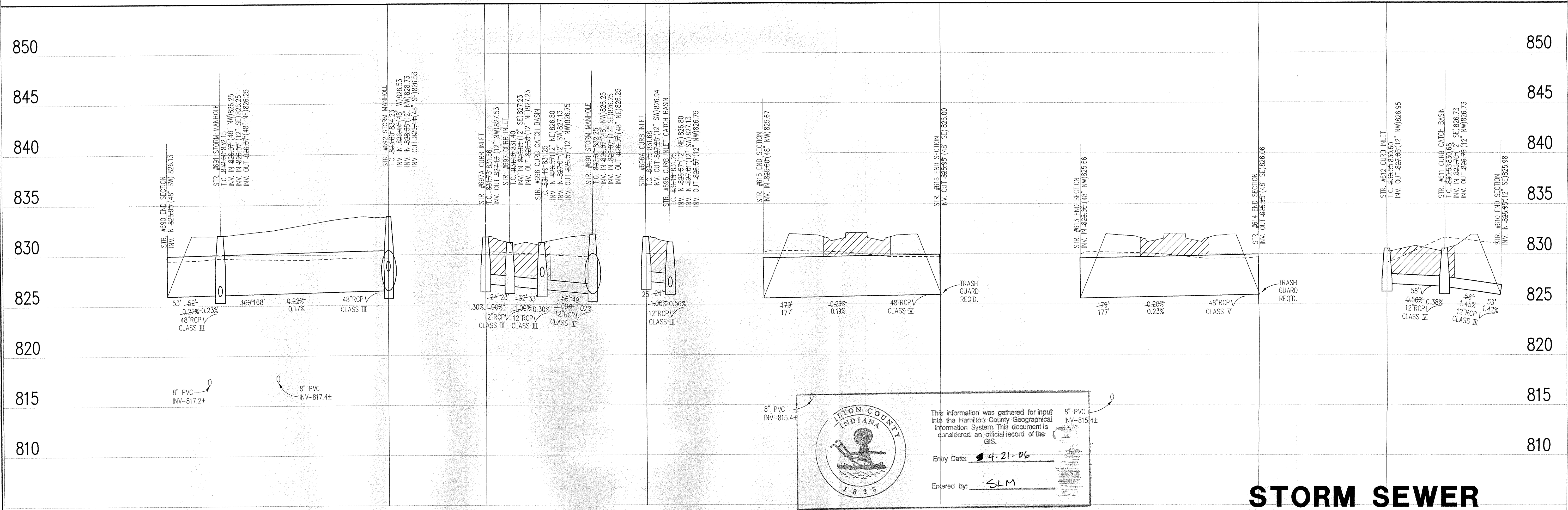
Sheet	Detail Number	Description
C804		Bedding Detail - Reinforced Concrete Pipe (RCP)
C805		Roll Curb Inlet Detail
C805		Beehive Inlet Detail
C805		Storm Manhole Detail
C812		Precast Concrete End Section
C812		RipRap Detail @ End Section

NOTE:
ANY TYPE "A" STORM STRUCTURE IN WHICH INCOMING OR OUTGOING PIPES ARE NOT PERPENDICULAR TO THE STRUCTURE SHALL BE INCREASED IN SIZE SO THAT THE CORNERS OF STRUCTURE ARE LEFT INTACT



STORM SEWER PLAN

SCALE: 1"=50'



8" PVC INV-817.2±

This information was gathered for input into the Hamilton County Geographical Information System. This document is considered an official record of the GIS.

Entry Date: 4-21-06

Entered by: SLM

8" PVC INV-815.4±

STORM SEWER PROFILE

LEGEND

Existing Grade	New Grade	Granular Backfill

SCALE: HORZ.: 1"=50'
VERT.: 1"=5'

STORM SEWER RECORD DRAWING

REVISIONS:
1. E.L.T. 08/14/02. REVISED PER THE COMMENTS FOR LANDSCAPE PLAN CONSIDERATIONS.
2. E.L.T. 08/14/02. REVISED PER CITY OF NOBLESVILLE COMMENTS.
3. E.L.T. 08/14/02. REVISED PER CITY OF NOBLESVILLE COMMENTS.
4. E.L.T. 7/26/04. "RECORD DRAWING"
5. E.L.T. 6/09/04. "RECORD DRAWING" REVISED S&D OUTLETS ALONG STONES CROSSING LANE.

BRANDON T. BURKE
REGISTERED PROFESSIONAL ENGINEER
No. 0000075
STATE OF INDIANA

Brandon T. Burke

DATE:
THIS DRAWING AND THE IDEAS, DESIGNS AND CONCEPTS CONTAINED HEREIN ARE THE EXCLUSIVE INTELLECTUAL PROPERTY OF THE SCHNEIDER CORPORATION, AND ARE NOT TO BE USED OR REPRODUCED, IN WHOLE OR IN PART, WITHOUT THE WRITTEN CONSENT OF THE SCHNEIDER CORPORATION.
© COPYRIGHTED BY THE SCHNEIDER CORP. (2002)

Schneider

THE SCHNEIDER CORPORATION
12821 E. New Market Street
Suite 100
Carmel, IN 46032
Telephone: 317.569.8112
Fax: 317.826.6410
www.schneidercorp.com

Architecture
Civil Engineering
Environmental Engineering
Geotechnical Services
GIS + LIS
Home Builder Services
Interior Design
Land Surveying
Landscape Architecture
Transportation Engineering

**CONNER CROSSING OF NOBLESVILLE
PHASE ONE ENTRY**
NOBLESVILLE, INDIANA

PRIMROSE DEVELOPMENT, L.L.C.
CARMEL, INDIANA

DATE: 6/26/02 PROJECT NO.: 3659.002
DRAWN BY: DCC CHECKED BY:
SHEET TITLE: STORM SEWER PLAN & PROFILE
DRAWING FILES:
XREF: S&I-BS.DWG
XREF: COT-1-BS.DWG
XREF: PBN-1-BS.DWG
XREF: BRK-1-BS.DWG
XREF: 3659005.DWG
XREF: FUTR-BS.DWG
XREF: 002-STW.DWG
SHEET NO.: C602

\\s3k\3659\002\dwgs\C601 - 602.dwg, 8/9/2004, 1:27:37 AM, ecc